

# News from the Brick

Nettle Creek Church of the Brethren  
5352 N. Brick Church Road  
Hagerstown, IN 47346

Established 1820



Carol M. Pfeiffer, Pastor  
Church Phone: 765-489-4430  
Parsonage Phone: 765-489-3435  
[nettlecreekcob@tmcsmail.com](mailto:nettlecreekcob@tmcsmail.com)  
[www.nettlecreekcob.com](http://www.nettlecreekcob.com)



Eloise Beeson, Secretary  
Sunday School: 9:00 a.m.  
Worship: 10:00 a.m.

September  
2004

*Continuing the Work of Jesus.  
Peacefully. Simply. Together.*

---

## Carol's Comments

### "How Far Would You Go?"

*Luke 14: 27-28; 33: Whoever does not carry the cross and follow me cannot be my disciple. For which of you, intending to build a tower, does not first sit down and estimate the cost, to see whether he has enough to complete it? ...So therefore, none of you can become my disciple if you do not give up all your possessions."*

Recently Bob, Paul, and I made a trip to Minnesota. That's not particularly unusual. But the reason we went was to pick up a Schnoodle puppy from a breeder in Minnesota. Many thought I was crazy to go that far for a puppy. A Schnoodle is ½ Miniature Schnauzer and ½ Miniature Poodle. The mix makes for a good personality in a dog as well as being less allergenic. There were not any breeders in the immediate area that I could find. I did my research on the breeder. I checked out all the things one needs to know before applying. This particular breeder had very strict guidelines for the prospective owners. The breeder wanted to make sure the puppy was going to a good home, would be taken care of etc. The breeder explained how the puppies were socialized with her family etc. And so after research and going through the application, I waited for when a Schnoodle would come available. The prospective owner puts a down payment to hold a potential puppy. That demonstrates the seriousness of really wanting a puppy. To make a long story short, our family was accepted and a puppy became available.



We traveled to Minnesota to pick up our Schnoodle. It was a long trip. When we arrived, we were introduced to our adorable Schnoodle. We got instructions on the puppy...a packet of materials, a contract, a shot record, a bag of toys, and two bottles of water. I never saw such a thorough job done for a dog. We named our friendly, lovable, frisky, inquisitive pup Schnickelfritz.

You may not be willing to go to Minnesota for a puppy, but as we think about our Christian faith or our relationship with Jesus Christ, how far are we willing to go to deepen **that** relationship? Jesus asks us to count the cost. Have we continued to count the cost of discipleship and found it worth it? How much are we willing to pay or give of ourselves to take the journey of a lifetime with a wonderful Savior? How devoted are we willing to be? How much are we willing to commit to learning all we can and to spending time with our God? Are we willing to make a place in our heart to receive the greatest love we can ever know?

When we accept Jesus Christ as our Savior, we make a covenant to love and to let Christ's spirit live in and through us. One might say that is our contract with Jesus Christ. When we journey with God, we receive a packet of information called the Bible. It is our instruction on how to live in relationship with God and neighbor. When we covenant with Christ, we learn to give and receive. When we walk with Christ, we find it worth the journey...worth the commitment...worth the love, peace, and joy that our relationship with Christ brings. Having a puppy brings challenges as I get to know to our pet. Having a relationship with Jesus Christ, brings challenges as we are stretched to grow, to obey, to love, to surrender, and to serve.

So friends, how far are you willing to go **for and with** Jesus Christ? Count the cost and see where you come out.

Prayerfully,  
Pastor Carol Pfeiffer

### Worship Team News Notes

The Worship Team has a **sign up sheet** for **Worship Leaders and Small Talk**. Check your calendar, prayerfully consider, and then sign up to worship lead or give a small talk or children's story. Perhaps you've not considered being either a worship leader or telling a children's story. Perhaps you have a gift not discovered or shared. Worship Aids are provided should you want them. So, look for the sign up sheet after Sunday worship back by the guest registry book.

### Bethany Emphasis Sunday – September 12



September 12 will be Bethany Emphasis Sunday. A special offering will be taken to give support to the seminary. **Bill House** graduated from Bethany in May 2004. **Ann Bach** will finish her degree in December and graduate May 2005. **Karen Garrett** is a beginning student this year. **Pastor Carol** graduated from Bethany in 1996. We are blessed to have the Seminary so close to us in Richmond. Dig deep and give **beyond your tithe** to the special offering for Bethany.

### Plan to Attend Love Feast Coming in October

Love Feast is **October 3 at 7:00 p.m.** For Brethren Love Feast begins with a period of **examination**. Brethren cite Jesus' words in Matthew 5:23-24, calling for reconciliation before offering gifts to God, and Paul's warning in I Corinthians 11:27-30 about the dangers of participating in the love feast in a thoughtless fashion. Following the time of examination, participants ponder the powerful meanings in **Jesus' washing of the disciples' feet**, recorded in John 13. These meanings include God's cleansing and forgiveness, as well as our need to give and receive service. Jesus command to wash one another's feet is a clear reminder that if we do not live in the spirit of footwashing, we have no part in him. The **Love Feast meal** recalls the meal Jesus shared with his disciples. The unique character of the relationship envisioned for those who are members together in Christ's body is described in John 14-17. The sharing of food symbolizes the sharing of life and looks toward the messianic banquet of the future. Finally, the Brethren share **the bread and cup**, remembering Christ's supreme gift of life and renewing their commitment to embody Christ and to follow his path of sacrificial love for the world (*For All Who Minister*). Come join in the celebration of Love Feast. **Feel free to attend as an observer if you have never participated before. All are welcome.**

### Church Directory

We are in the process of bringing our church directory up-to-date for 2005. If you have any additions or changes in the addresses, new class officers, please turn them in to the office or e-mail Eloise at [ebeepaint@aol.com](mailto:ebeepaint@aol.com)

### Musician Schedule for September

September 5 Organ – Jeff Bach  
Piano- no one  
12 Organ - Rita Hilbert  
Piano - Beth Bowman  
19 Organ - Lucille Dilling  
26 Organ - Rita Hilbert  
Piano – Beth Bowman

### Chorister for the Month of September

Dee Reneau - 5  
Sally Schmittler – 12, 19, 26



If God is slow in answering your request, and you ask but do not promptly receive anything, do not be upset, for you are not wiser than God. – Abraham of Nathpar

**Continuing to Pray for...**

**\*Bill Stout**

**\*Bob & Harriet Burroughs**

**\*Raymond Hoover**

Bob Klein

Jane Briar

Terri Schmittler

Wilda Helms

Jeremy DeVinney

Cliff & Mary Jane Renaker

Home: Mary Werking

Care Center: LuFreda Bowman

**Giving For August – 4 of 5 Sundays**

**Average Offering needed monthly to meet budget..... \$1,420.29**

**Average Offering for August..... \$1,151.91**

August

1.....\$ 1,755.30

8.....1,055.25

15..... 940.10

22..... 857.00

29.....not available at press time

Food Pantry.....\$ 15.00

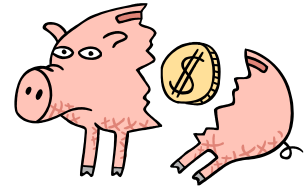
Shirley Root Memorial 50.00 (used for regular offering)

On Earth Peace Offering 64.00

Estella Hilbert Memorial Fund.....460.00 (used for regular offering)

Pennies from Heaven..... 57.00 (used for school supplies for family from Township Trustee Office)

**Average Attendance for August .....45**



**Church Women United News – Thrift Shop**



The Hagerstown Church Women United still **needs volunteers**. **Work days** are Tuesday, 3:30-10:30 a.m. and Wednesday, 4:30-6:30 p.m. Even if you only have an hour, any help will be appreciated. Carol Bullock is the Manager of the **Thrift Shop**, and Donna King works part-time. **Business hours are 12:00-4:00 p.m., Tuesday thru Saturday except Thursday, 4:00-7:00 p.m.**

**Other Sign Up Sheets**

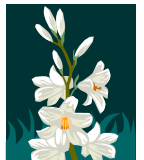
Don't forget to check the bulletin board for mowing and cleaning sign up.

**Internet Updates**

Those of you who have Internet access can check the calendar of events online. They are updated frequently. New information is placed on the Home Page. You can look ahead as you plan your schedule to see what is coming up at church.

**Sympathies Extended**

We extend our sympathies to the families of **Estella R. Hilbert**, 95, who passed away August 8, 2004 and **Beverly Ann Hoover**, 74, who passed away August 10, 2004.



**Special Birthday**

Happy Birthday to **LuFreda Bowman**, who turned **96** on August 16. LuFreda resides in Room 36 at Heritage House in Richmond.

**September Birthdays**

- 2 Joy Klein
- 5 Iona Lauver
- 6 Don Swoveland



- 12 Tracy Schmittler
- 14 Bill DeVinney
- 19 Harold Hilbert
- 21 Trevor Stout
- 23 Nancy Andrew, Kasey Reneau, Elizabeth Bach
- 25 John McCormack
- 27 Alicia Stout, Jayme Brandenburg
- 29 Patrick Briar



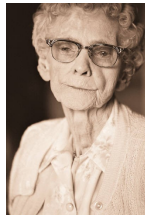
**Community Thanksgiving Service in November – Mark Your Calendars**



A community Thanksgiving Service is being planned for November 21 at 6:00 p.m. at the **Nazarene Church**. Pastor Arnold McConnell from the Chicago Corner Church will bring the message.

**Catch the Wave! – An Emphasis and Awareness of Older Adult Issues for the Future**

Attend an Age Wave Workshop to be held **Saturday, October 2, 2004** at Manchester Church of the Brethren. It is presented by Scott Douglass from the Association of Brethren Caregivers, (ABC) and co-sponsored by Manchester Church of the Brethren and Timbercrest Senior Living Community of North Manchester, Indiana. **Registration due by September 20**. The registration fee of \$5.00 (includes lunch) can be paid at the door. Email: [scicob@hossierlink.net](mailto:scicob@hossierlink.net) or [manchestercob@hoosierlink.net](mailto:manchestercob@hoosierlink.net). Manchester CoB is a fully accessible facility.



**Alexander Mack Festival**

Gather some friends or relatives and head up to Camp Mack for the **Alexander Mack Festival Saturday, October 2, from 8:30 a.m. to 4:00 p.m.** Enjoy festival food, fun and entertainment for the whole family. There will be two auctions. An estate auction will be held at 8:30 a.m. The traditional auction of quilts, antiques, old books, art and baskets full of goodies will begin at 2:00 p.m.

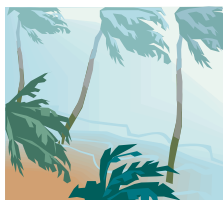
**Quilting Retreats at Camp Mack**

Quilting retreats are popular at Camp Mack and usually fill quickly. Register now for the fall retreat, October 15-17. The cost is \$78.00. Call or email Camp for more information. Phone: 574-658-4631; email: [campmack@npcc.net](mailto:campmack@npcc.net)

**A Quiet Place Quote:** The essential thing is not what we say, but what God says to us and through us.”  
- Malcolm Muggeridge

**Brethren Affected by Hurricane Charley -Take Part in Relief Effort.**

Hurricane Charley, which cut a swath of destruction across Florida Aug. 13, was the state's worst disaster since Hurricane Andrew in 1992, according to the General Board's Emergency Response/Service Ministries (ER/SM). Atlantic Southeast District reported that two Churches of the Brethren sustained structural damage Brethren responses to the disaster include a first grant from the General Board's Emergency Disaster Fund, a shipment of relief supplies, and the dispatching of Disaster Child Care volunteers and an assessment team of denominational and district leaders.



"We covet your prayers and concerns," said Atlantic Southeast district executive Martha Beach. The damaged churches were Arcadia, which sustained severe damage and lost one-third of its roof, and Community Church of the Brethren in Orlando, which lost part of its roof causing the drywall inside the building to collapse. Other churches and Camp Ithiel had trees or large tree limbs come down, and many lost water and electric service. In a Sebring trailer park where several Brethren live, including Sebring pastors Cecil Hess and C.

Wendell Bohrer, eight homes were completely destroyed and many others severely damaged. One couple from the Sebring congregation had a large tree fall in the middle of their home, Beach reported.

ER/SM staff were in touch with district leaders and other partners in disaster relief since before the storm made landfall. A shipment of relief supplies was made from the Brethren Service Center in New Windsor, Md., Aug. 19, including 32 cartons of Health Kits and 185 cartons of Cleanup Kits. A first grant of \$5,000 was made from the Emergency Disaster Fund. Disaster Child Care project managers were dispatched Aug. 18 and 12-15 child care volunteers have been sent to a staging area in Brandon, Fla., to be deployed from there once it is determined the exact location where they will be serving. An assessment visit was made Aug. 19-20 by Beach, Emergency Response director Roy Winter, and district moderator and disaster coordinator John Mueller, starting in Fort Myers and Arcadia then traveling to Orlando to the Community church and Camp Ithiel.

Winter issued a call for volunteers to help with what he called "a significant Brethren clean up" effort. "It'll be a long time before we start the rebuilding effort, months and months," he said, adding that there will be a need for patience with the pace of work required by the extensive destruction. To volunteer, call the Emergency Response office at 800-451-4407 ext. 3. The Brethren effort will be made despite what Winter called "huge problems with housing for volunteers and survivors." The Red Cross is considering the need for long term shelters for thousands of people, he said. Winter also expressed a concern of ecumenical agencies--Church World Service and the National Council of Churches--for "more vulnerable populations" such as migrant workers and farm laborers. ( from *Newsline* of the Church of the Brethren)

### **SERRV International Changes Its Name to 'A Greater Gift.'**



Beginning August 10, SERRV International has changed its program name to "A Greater Gift," according to a release from the organization's marketing team. The new name comes with a new logo and a new tagline, "Hope and justice with every purchase." The logo is loosely based on a West African symbol that radiates energy and represents the seven seas and seven continents, and can be viewed at [www.agreatergift.org](http://www.agreatergift.org).

"You can see our new look in our 2004-2005 Catalog, which will be arriving in your mailboxes soon!" said the release. "Our stores handcraft marketing program, and website will all carry the new name. We feel the new identity will reach a broader audience, which will help us increase our impact on world poverty."

While the stores, handcrafts, and website will change names, SERRV International will remain the legal name of the organization. **SERRV was formerly a Church of the Brethren denominational program.** For more information contact A Greater Gift at 888-243-4423 or e-mail [marketing@serrv.org](mailto:marketing@serrv.org). (from *Newsline*)

### **A Brethren Working at Olympics in Athens, Greece**

**Stephen Simons, a member of Prince of Peace Church of the Brethren, South Bend, Indiana** is in Athens, Greece, **working as a physician for the US Olympic team.** Currently he is stationed at the boxing venue, according to his pastor David Hendricks. When track and field events begin--which Simons called his "passion" in an interview with South Bend's Newscenter16--he will be working at the Olympic Stadium. Simons is a specialist on foot problems and works at an orthopedic sports clinic in South Bend, teaches at a medical school, and travels across the country lecturing on sports injuries, Hendricks said. Simons told his pastor that the Olympics are "an experience of a lifetime." His ongoing "Doctor's Diary" from the Olympics, complete with photos, can be found at [www.wndu.com](http://www.wndu.com). ( from *Newsline*)

The trouble with nearly everybody who prays is that he says "Amen" and runs away before God has a chance to reply. Listening to God is far more important than giving him your ideas.

- Frank Laubach