

We are coming into the season of Lent on February 6, Ash Wednesday. I encourage you to look for God's love and presence in each situation. **Purposely look for it.** Take inventory at the end of the day to remind yourself where God has been for you. It may take some practice to do that, but the more you take inventory you will begin to see how close God has truly been throughout your day. And the more you notice, the more you will be able to sense the presence of God with you IN the moment.

We have so many things in this world that pull us away from our center in God. We, as Christians, need to focus on God. When we do, we find that whatever trials or junk comes our way we know that we are loved and nothing can separate us from God's love. He has promised never to leave us or forsake us. ("God has said, 'Never will I leave you; never will I forsake you.' So we can say with confidence, 'The Lord is my helper; I will not be afraid. What can man do to me?'" Heb. 13: 5-6) We may let things pull us away in our busyness, but God is still there to offer comfort, wisdom, love, forgiveness, hope, peace. So I ask you, have you seen Jesus, my Lord? Take a look. Open your eyes. He'll show love to you.

May this Lenten season be a time of finding Jesus.

In Christ, for Christ,  
Pastor Carol M. Pfeiffer

### Congratulations on 50<sup>th</sup> Wedding Anniversary



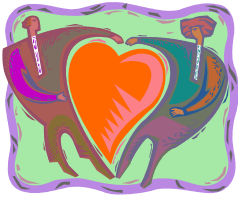
Dave and Dee Reneau celebrated their 50<sup>th</sup> wedding anniversary with family on January 9.

### Church Board Meeting Changed

The Church Board meeting has been moved to February 8 at 6:30 p.m.

### Gifts of the Heart Health Kits

The **Seekers Sunday School** class is putting together health kits to send to the victims of Tsunami. The cost of **one kit is \$5.00**. If you would like to contribute to this relief effort, you may give toward as many kits as you would like to support. They would like to send at least one hundred kits. The Sunday School class will purchase the items for the kits. The **kits will be assembled on Sunday, February 6 at 4:00 p.m.** Kit assemblers are needed. Soup will be provided for those that come. Some donations have already come in for which the class says, "Thank you." You may see anyone in the Seekers' class to contribute.



### Mid-week Lenten Suppers

Beginning on Ash Wednesday, **February 9 at 6 p.m.**, we will be having **six Lenten Services**. Soup and bread will be served and then we will move into the service. The format will be informal. The service will focus on "Life on the Edge of Faith" and be forty-five minutes to one hour. There are sign up sheets in the east Sunday School classroom for soup and/or bread as well a list to sign for attendance to help us determine food amounts. Please join us as we reflect upon this Lenten season.



### Groups - Want More

We have two interest groups that have begun. One is the Nettle Creek Red Hatters and the other is a Ceramic group. See Beverly Nicholson or Pastor Carol if you have interest or know of someone who wants to be a Red Hatter. The Ceramic group meets on Tuesdays from 9:00 -11:00 at Show and Tell. See Juli Proctor if you have interest in the Ceramic group. Invite your friends and neighbors or anyone that might not have a church home. If you have **an interest in a certain area** and would like to get together with others of similar interest, or if you have a group you would like to see started of an interest of yours but don't want to lead, also let Pastor Carol know.

### Thursday Morning Prayer Group

Anyone may come to the church on Thursday mornings for prayer and support. The group meets from 8:00 a.m. - 9:00 a.m.

